

6100 SERIES

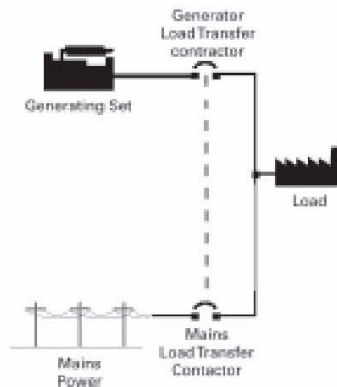
CONTROL PANEL

Automatic Mains Failure (AMF). When the 6000 Series panel is configured as a 6100 control system, the controller waits to receive a remote start signal on failure of the mains supply. The mains failure sensing is performed external to the 6100 control system.

When operating in Automatic Mains Failure mode the controller waits for a remote start signal to indicate that the mains have failed. On failure of that supply the mains load transfer contactor opens, and after an adjustable time delay the generating set is started. When the generating set is ready for the load the generator load transfer contactor closes. After mains power returns and remains healthy for a present time, the generator start signal is removed, the generator contactor opens and the mains contactor closes. The generating set stops after a cooling off period.

Note: In this configuration the mains load transfer contactor and the generator load transfer contactor should be electrically and mechanically interlocked to prevent simultaneous engagement.

The optional facility of the industry standard Modbus protocol communication interface ensures compatibility with most building management or SCADA / HMI systems.



STANDARD FEATURES

- **GENERATING SET PARAMETER DISPLAYS
(2 x 4 line LCD DISPLAY)**

AC voltage phase to phase and phase to neutral (on 3 phases)

AC current (on each of 3 phases)

Frequency

Cos ϕ (power factor) average

kW – total + per phase

kVAr – total + per phase

kWh – total

% Voltage difference between bus and generator

Hours run

Coolant Temperature

Lube oil pressure

DC Voltage

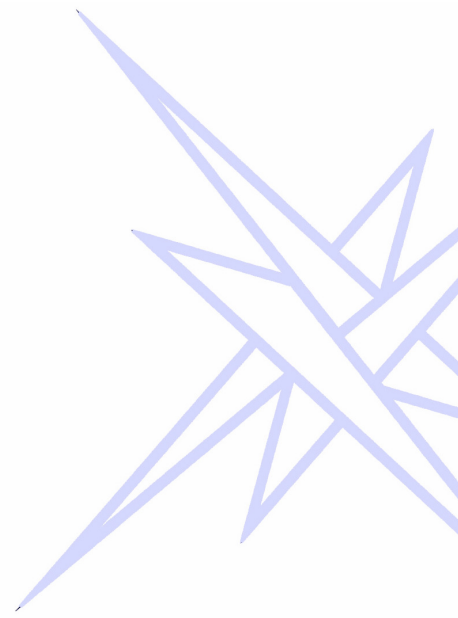
- **BUS PARAMETER DISPLAYS**
AC Voltage / frequency within limits indicator

- **OPERATOR CONTROLS**
Off / auto / test / run control switch
Emergency stop pushbutton (lockdown)
Membrane keypad with tactile feedback

- **SYSTEM CONTROLS**
3 Attempt start counter
Cool down delay
Pre-glow delay
Remote start capability
Reverse power relay
Static battery charger 5A 220/240 Volt

- **SHUTDOWNS AND ALARMS**
High coolant temperature shutdown
Low oil pressure shutdown
Over-speed shutdown
Fail to start shutdown
Emergency stop operated
Reverse power shutdown
Over-voltage shutdown
Under-voltage shutdown or alarm
Over-frequency shutdown
Under-frequency shutdown or alarm
Battery under-voltage alarm
Battery over-voltage alarm
Alternator loss of excitation alarm
Spare fault channels, up to 3:
 - Low coolant temperature alarm
 - Earth fault
 - Earth Leakage
 - Low fuel level shutdown or alarm
 - Low coolant level shutdown

- **STATUS INDICATORS**
Fault log memory
Password security
Interface to remote monitoring package



OPTIONAL FEATURES

- **SYSTEM CONTROLS**
Volt free contacts for generating set running
Volt free contacts for common alarm
- **SHUTDOWNS AND ALARMS**
Earth fault shutdown
Earth leakage shutdown
High fuel level alarm

In line with the policy of continuous development, the manufacturer reserves the right to change specification without notice
6100 Series Control Panel/1006

Tel: +44 (0) 1924 455350
Fax: +44 (0) 1924 451001
sales@progress-group.com
www.progress-group.com



Authorised Service Dealer

Progress Group
Dale Works, Brewery Lane
Thornhill Lees
Dewsbury
West Yorkshire
WF12 9HU

Progress Group
Supplying Power Worldwide

